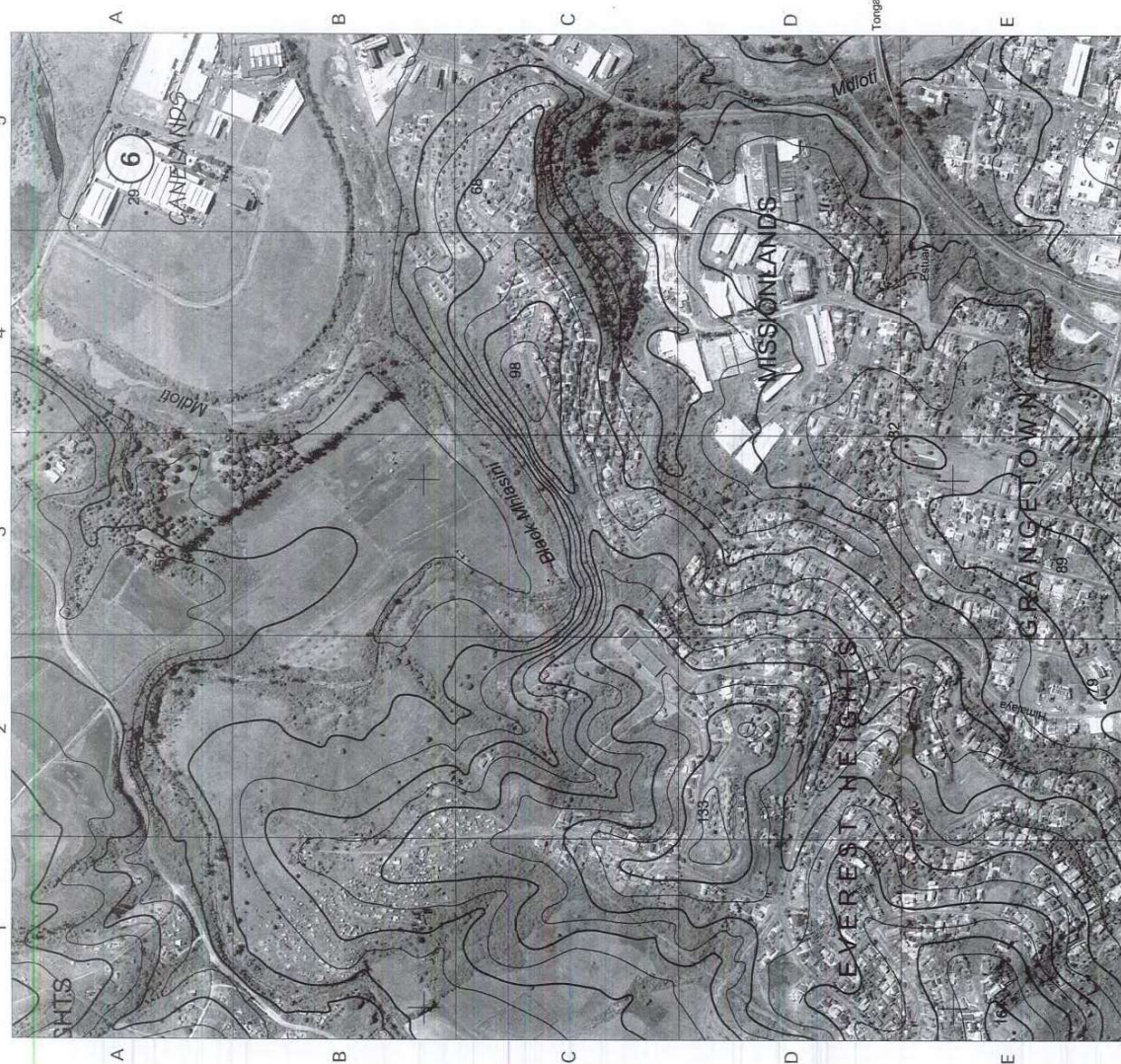


Metres 1000 0 1 2 3 4 5 Kilometres

Mean magnetic declination 25°04' West of True North (May 2016).
 Mean annual change 9' Westwards (May 2016 - April 2017).

REFERENCE

National Freeway; National Route.....	International Boundary and Beacon.....	Fence; Wall.....	Windpump; Monument.....
Arterial Road.....	Provincial Boundary.....	Communication Tower.....	Communication Tower.....
Main Road.....	Provincial Area.....	Mine Dump; Excavation.....	Mine Dump; Excavation.....
Secondary Road; Bench Mark.....	Perennial River.....	Trigonometrical Station; Marine Beacon.....	Trigonometrical Station; Marine Beacon.....
Other Road; Bridge.....	Perennial Water.....	Lighthouse and Marine Light.....	Lighthouse and Marine Light.....
Track and Hiking Trail.....	Non-perennial River.....	Cemetery; Grave.....	Cemetery; Grave.....
Railway Station or Siding.....	Non-perennial Water.....	Erosion; Sand.....	Erosion; Sand.....
Other Railway; Tunnel.....	Dry Water Course.....	Woodland.....	Woodland.....
Embankment; Cutting.....	Dry Pan.....	Cultivated Land.....	Cultivated Land.....
Power Line.....	Marsh and Vlei.....	Orchard or Vineyard.....	Orchard or Vineyard.....
Build-up Area (High, Low Density).....	Pipeline (above ground).....	Water Tower; Reservoir; Water Point.....	Water Tower; Reservoir; Water Point.....
Buildings; Run.....	Water Tower; Reservoir; Water Point.....	Row of Trees.....	Row of Trees.....
Post Office; Police Station; Store.....	Coastal Rocks.....	Original Farms.....	Original Farms.....
Place of Worship; School; Hotel.....	Prominent Rock Outcrop.....		



0 km 100m 200m 300m 400m 500m 1 km

CONTOUR INTERVAL 5 METRES - KONTOERTUSSENRUIMTE 5 METER
 VERKLARING

Nasionale Duurpad; Nasionale Roete.....	Internasionale Grens en Baken.....	Draadheining; Muur.....	Draadheining; Muur.....
Hooftrekersroete.....	Provisiale Grens.....	Windpomp; Monument.....	Windpomp; Monument.....
Hoopstad.....	Bewarings Gebied.....	Kommunikaasoring.....	Kommunikaasoring.....
Sekondêre Pad; Hoogtemark.....	Standhoudende Rivier.....	Myrhooop; Uitgraving.....	Myrhooop; Uitgraving.....
Anders Pad; Brug.....	Standhoudende Water.....	Pelbaken; Seewaarbaken.....	Pelbaken; Seewaarbaken.....
Dowwe Pad en Voetlaanpad.....	Nie-standhoudende Rivier.....	Vuuroring en Seewaaring.....	Vuuroring en Seewaaring.....
Spoorweg; Stasie of Sylyn.....	Nie-standhoudende Water.....	Begraafplaas; Graf.....	Begraafplaas; Graf.....
Anders Spoorweg; Tunnel.....	Droë Loop.....	Erosie; Sand.....	Erosie; Sand.....
Opvulling; Deurgang.....	Moras en Vli.....	Beboete Gabel.....	Beboete Gabel.....
Kraglyn.....	Pylyn (bo die grond).....	Boord of Wingerd.....	Boord of Wingerd.....
Beboete Gabel (Hoë, Laë Digtied).....	Wateroring; Reservoir; Waterpunt.....	Ontspanningsreëlin.....	Ontspanningsreëlin.....
Geboue; Murasle.....	Kuslynroete.....	Rye Bome.....	Rye Bome.....
Postkantoor; Polisieostasie; Winkel.....	Prominente Klipbalk.....	Orspronklike Plaas.....	Orspronklike Plaas.....
Plek van Aandbidding; Skool; Hotel.....			